

NEXITE

NEXITE®. concrete.

a new generation

ACO DRAIN® Multiline NX



DESIGN
AWARD
2025

Increased material range for more applications

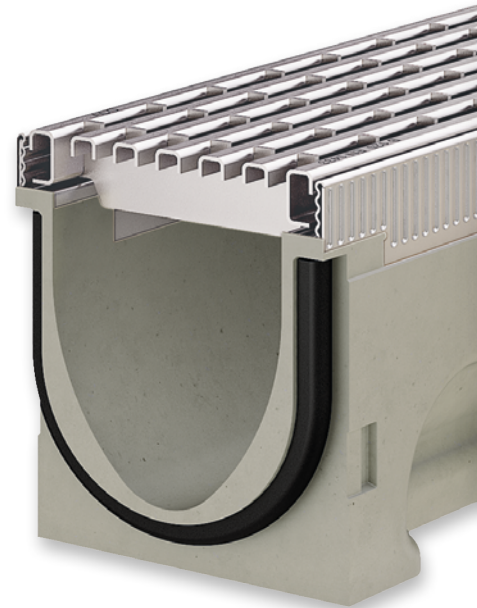


ACO DRAIN®

The benchmark for drainage for over 50 years

ACO DRAIN® Multiline

made of ACO polymer concrete, with
V-cross-section, proven millions of times
worldwide to date



reddot winner

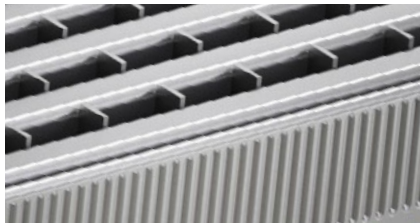


ACO design cover in Voronoi design

Inspired by nature, ACO design covers in cast
iron set design accents



reddot winner



Intelligently designed and processed

The Hypersteel edge protection of the
ACO DRAIN® Multiline saves 50 % CO₂-eq



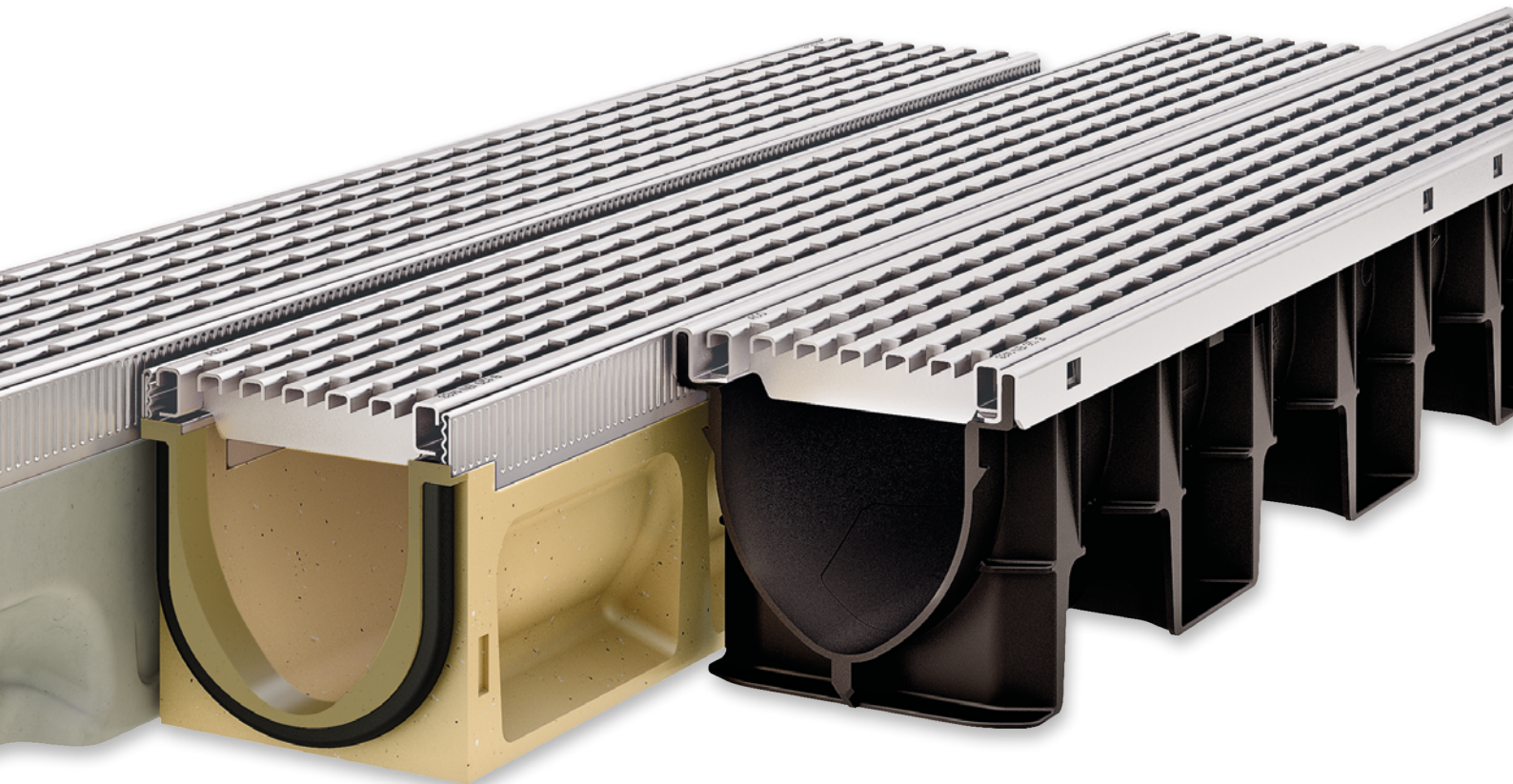
The ACO Composite Grating B 125/C 250

Made entirely of recyclable plastic:
sustainable, non-slip, R 11, thanks to Microgrip
and easy to handle thanks to the Drainlock
screwless locking system



ACO DRAIN® XtraDrain made of composite

Extremely lightweight and yet highly stable
up to class C 250



The ACO DRAIN® family, a material solution for any project

- ...► polymer concrete
- ...► composite
- and now:
- ...► NEXITE®. a new generation in channel drainage



Sealⁱⁿ
TECHNOLOGY

ACO Sealⁱⁿ Technology

Protection for the environment and the building: The unique combination of the polymer concrete material and the standard seal ensures a continuously water tight linear drainage

NEXITE

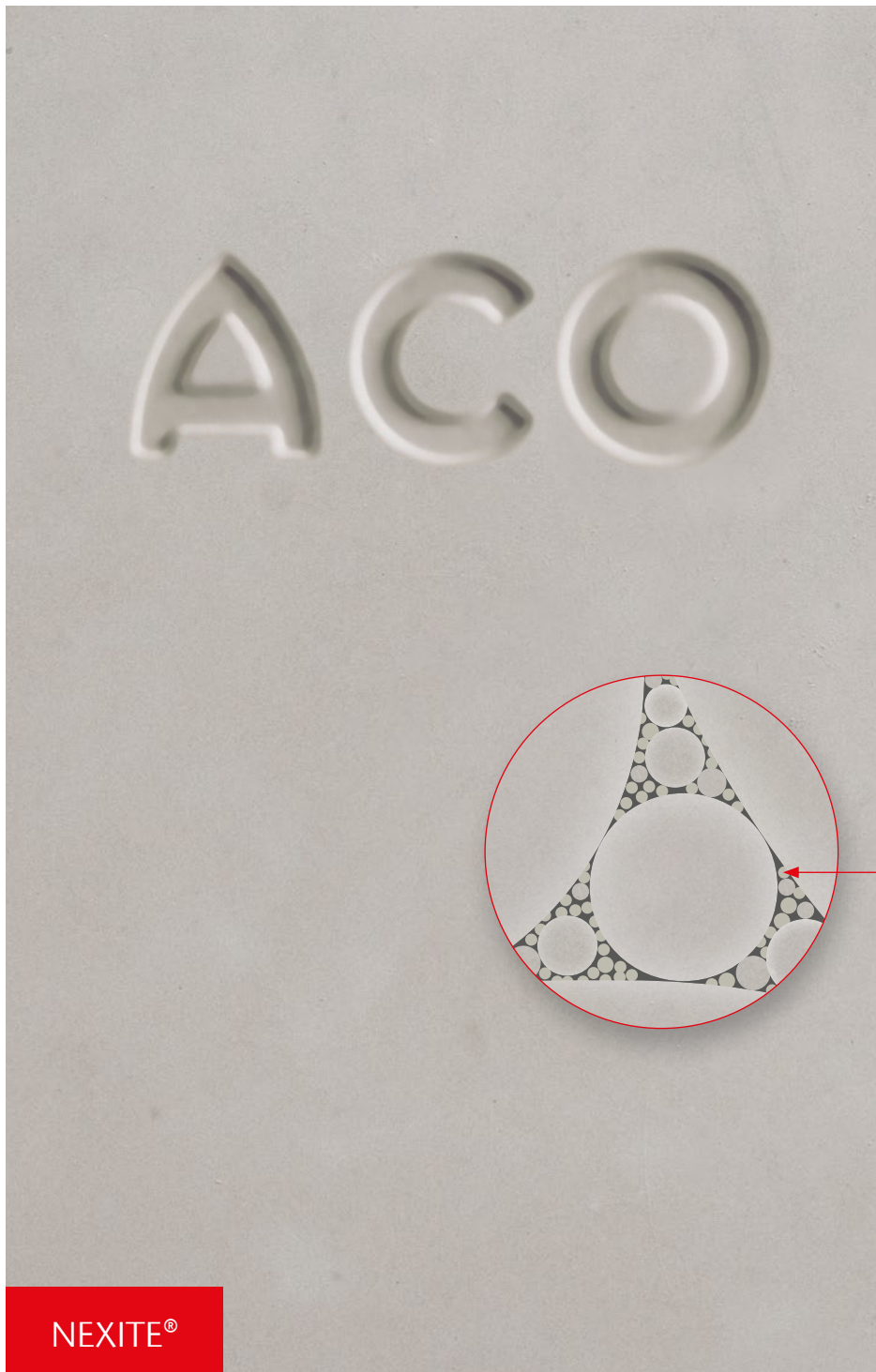
ACO DRAIN® Multiline NX

Made of NEXITE®, the new material
in the ACO DRAIN® family



The ACO DRAIN® Multiline NX drainage channel has been honoured with the prestigious iF DESIGN AWARD 2025. This globally renowned award is an award for excellence in outstanding design and quality.





■ optimised
packing density
with fine fillers

NEXITE®

Material characteristics

- resistant to frost, de-icing salt and media far beyond the requirements of EN 1433
- compressive strength > 90 N/mm²
- non-flammable
- environmentally certified according to KIWA BRL 5070

The newly developed ACO material NEXITE® (abbreviated NX) is composed with very fine fillers, which enable a high packing density. This results in particularly high strength and load-bearing capacity.

The binders are used in accordance with the European Directive REACH on the protection of human health and the environment. This means that NEXITE® products support sustainable construction in the fields of public urban places, roads, infrastructure as well as heavy load applications.

NEXITE® is 100 % recyclable and can be reused in the natural material cycle.



Product quality is dependent on the material

“As a market leader, ACO is committed to innovation. Due to its high packing density, NEXITE® is extremely resistant to intense loading from traffic and attrition from environmental influences such as polluted surface water. NEXITE® has been environmentally certified by KIWA, a globally recognised specialist in the certification of building materials and products.

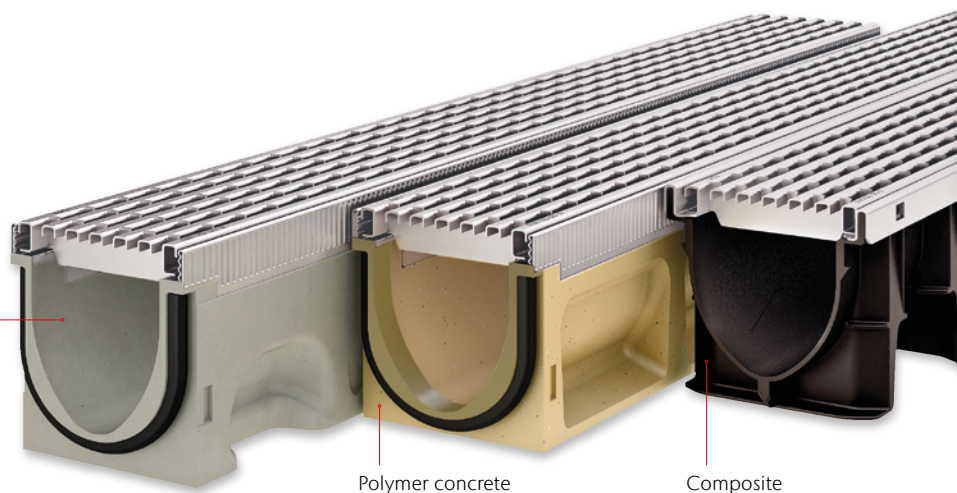
With NEXITE®, we have expanded ACO’s multi-material expertise in a forward-looking way continuing to incorporate modern material variants to the ACO DRAIN® family. NEXITE®. concrete. a new generation in channel drainage”



Sebastian Danckert-Ebens
Managing director ACO GmbH



NEXITE



Material choice to suit your project!

NEXITE



DESIGN
AWARD
2025

edge rail available in
galvanized steel, cast iron
and new: **composite**

available with all
ACO Drainlock gratings
and material uniformity
for edge protection and
gratings

light as usual, less than
20 kg for Multiline NX
in nominal width 100

lightweight

watertight channel run
due to NEXITE® and
ACO Sealin technology
according to
IKT certificate D01398

Sealin
TECHNOLOGY

watertight

NEXITE®, environmen-
tally certified by KIWA
according to BRL 5070

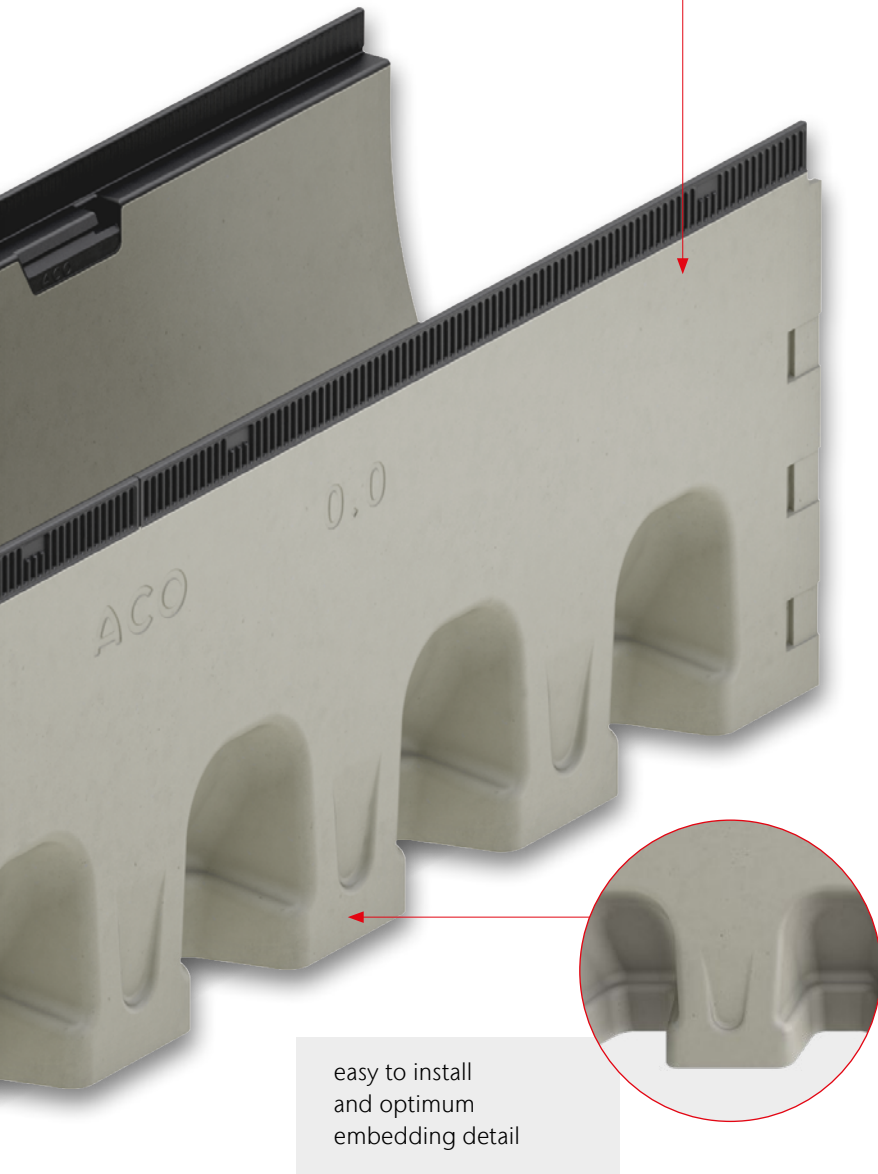
robust

frost, de-icing salt and
chemical resistant
far beyond the require-
ments of EN 1433

The ACO DRAIN® Multiline NX drainage channel has been honoured with the prestigious iF DESIGN AWARD 2025. This globally renowned award is an award for excellence in outstanding design and quality.



100 % recyclable



easy to install
and optimum
embedding detail

“With the use of NEXITE® in the ACO DRAIN® family, we are adding an essential constituent to our multi-material competence. The triad of channel ranges incorporates polymer concrete, plastic and NEXITE®. They all feature a common use of the large variety of ACO Drainlock gratings. With this, we meet the extensive requirements of the market in terms of flexibility and cost-effectiveness.”

Tim Uhing
International product management

Commitment to quality



IKT – Institute for Underground
Infrastructure in Germany



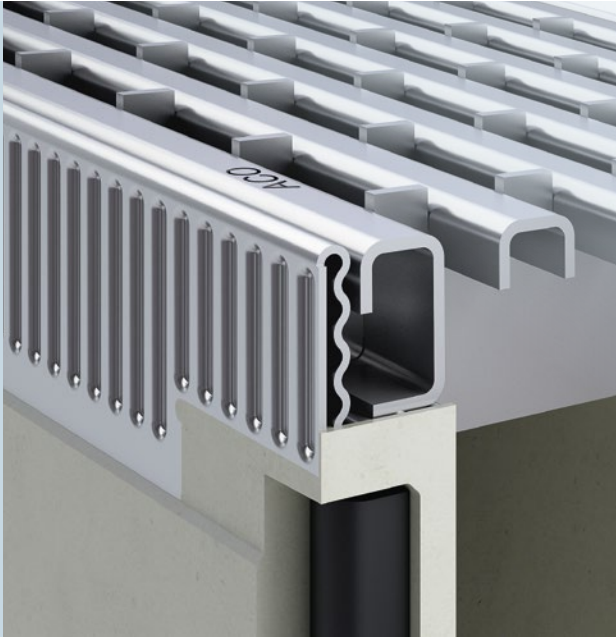
KIWA – Third Party Control
in Germany



Certifications



Material homogeneity for edge protection and gratings



Steel edge rail and grating

The innovative Hypersteel design of the galvanised steel edge protection causes approx. 50 % less CO₂-eq compared to the ACO standard edge protection due to the reduced material input in the manufacturing process. In combination with Drainlock gratings in slot, mesh or slot top design this makes for a very popular choice.

- compatible with boltless locking system Drainlock
- available in steel and stainless steel
- large selection of grating designs and slotted frames

Cast iron edge rail and grating

The strong cast iron edge rail is made for heavy duty applications and in parallel provides a clear aesthetic profile especially for applications in public urban spaces. Combined cast iron Drainlock gratings in slot or mesh design – this material combination is favoured these days.

- compatible with boltless locking system Drainlock
- high load-bearing capacity up to class E 600
- cast iron gratings also available in ACO Freestyle design

A consistent design language

“Design freedom and sustainability are deeply rooted in modern architecture and planning. With three materials, each for channel body and edge protection as well as compatibility with the Drainlock grating range, we offer architects and planners the desired flexibility for different areas of application. The new plastic edge protection enables a consistent design language in a new dimension. The combination of composite edge protection and cover with the NEXITE® channel body is the most sustainable variant in the ACO DRAIN® family.”



Marie Lauer
Technical sales

NEW Composite edge rail

The innovative composite edge rail opens completely new design possibilities, especially in the field of landscaping.

- non-corrosive
- colour stable
- noise-reducing
- compatible with boltless locking system Drainlock
- in combination with composite grating our most sustainable variant

Composite edge rail and grating



The ACO DRAIN® Multiline NX drainage channel has been honoured with the prestigious iF DESIGN AWARD 2025. This globally renowned award is an award for excellence in outstanding design and quality.



The ACO DRAIN® design kit

„The design of the gratings in the ACO DRAIN® family supports the design of open spaces, building and infrastructure. To ensure the planner has the greatest possible design freedom we are constantly developing new products. In order to do this we keep a close eye on the direction in which design trends and new materials are developing. Besides the design of the surface, there are of course also many other complex details to consider. The outcome of our most recent focus is a modular design system with solutions for every application.“

Johanna Ladewig
Design and development

Highlights of the grating range



double slot grating
available in stainless steel



mesh grating Q+
available in steel or stainless steel



longitudinal profil grating
available in steel or stainless steel



longitudinal bar grating
available in steel or stainless steel

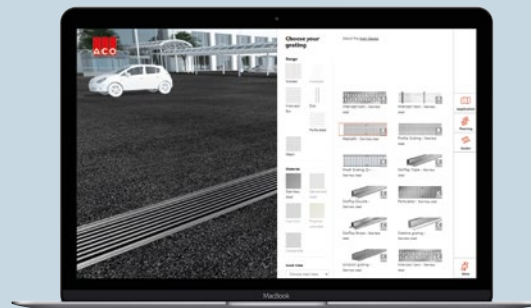
composite grating Eyeleds with
LED lighting in white or blue

longitudinal rod cast iron
gratings with mesh look

creative with Freestyle cast iron
gratings and individual designs



composite grating with Micrigrip
available in black or silver grey



ACO Multiline grating configurator

The ACO Multiline grating configurator makes it possible for planners and architects to choose Multiline gratings according to visual criteria. All technical information regarding the selected Multiline Drainlock grating can be downloaded and saved in the object folder.

www.draindesign.aco



Tim Uhing
International product management

“Material choices
to meet your need”

Marie Lauer
Technical sales

“The plastic edge protection
enables a consistent design
language in a new dimension”

NEXITE



Sebastian Danckert-Ebens
Managing director ACO GmbH

“Innovation and evolution
at the same time.
NEXITE®. a new generation
in channel drainage”

Johanna Ladewig
Design and development

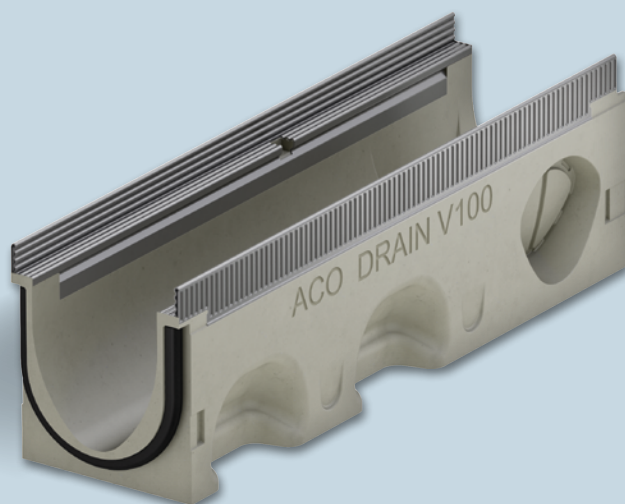
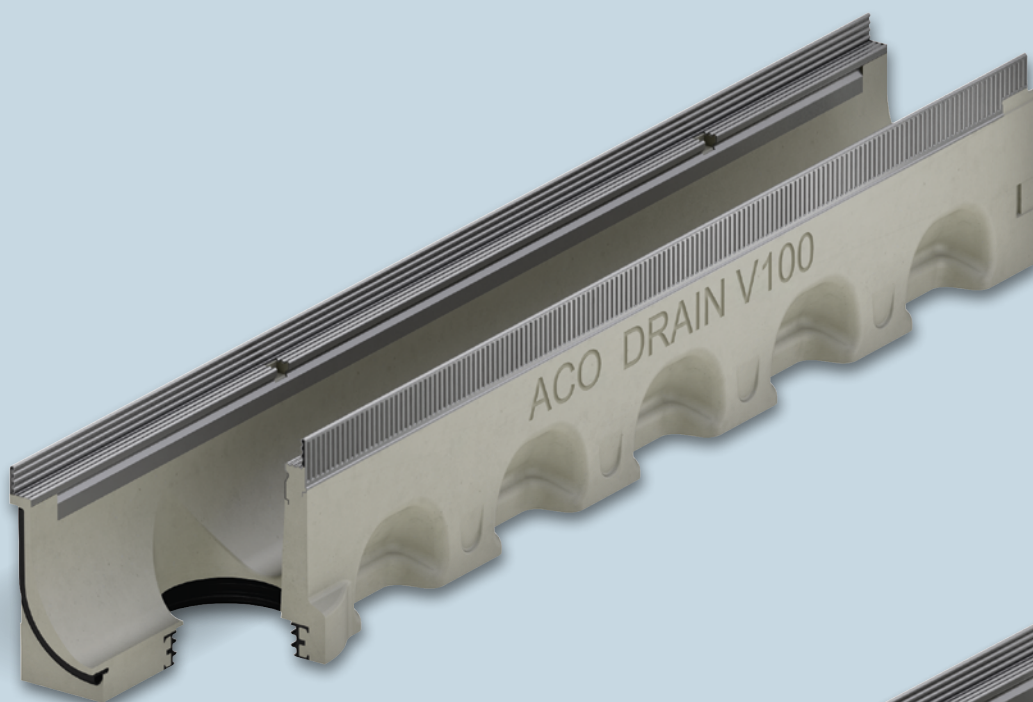
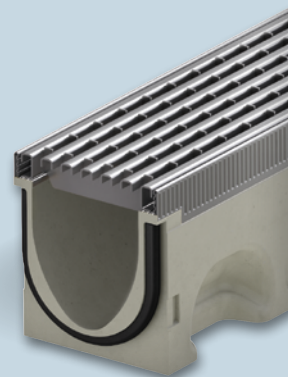
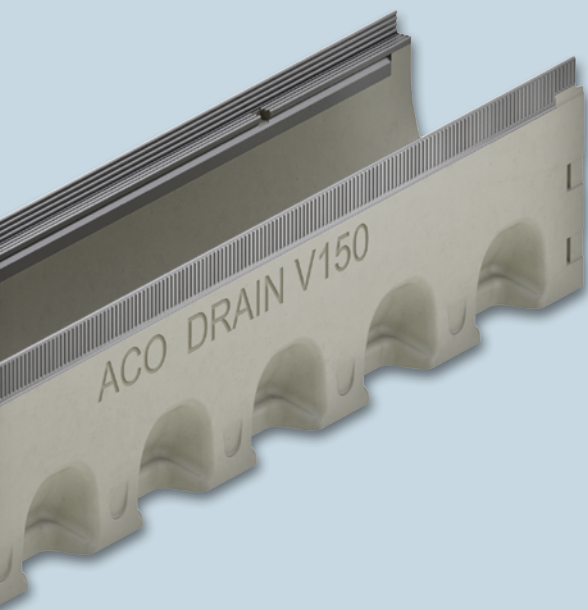
“A modular design system
with solutions for every
application”

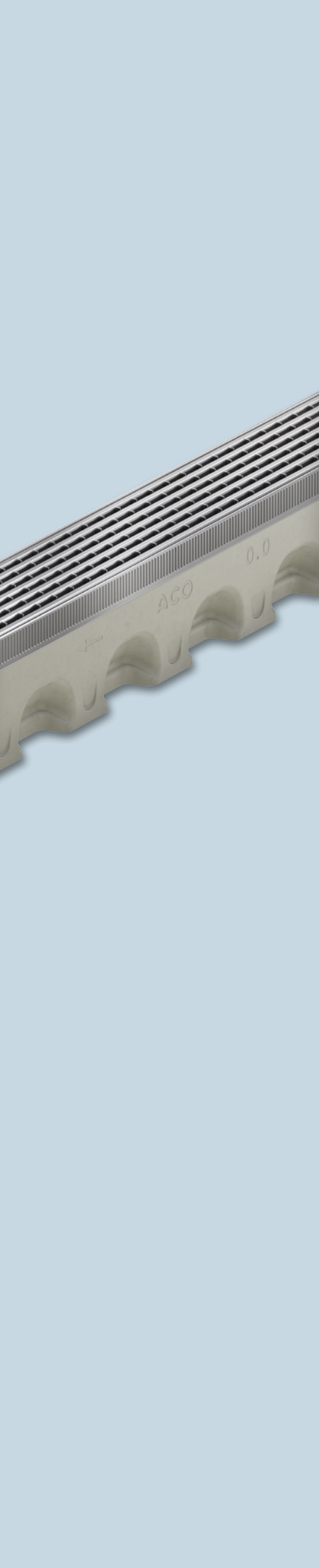
NEXITE®. concrete.

a new generation

ACO DRAIN® Multiline NX

The new ACO DRAIN® Multiline NX meets a wide range of application requirements. Both in urban areas and out of town, the drainage system provides reliable and future-oriented solutions.





Technical information

A modular system

Outstanding in design and application.

ACO DRAIN® Multiline NX made of NEXITE® is based on a system idea that provides advantages for everyone:

for planners, traders, contractors and building owners.

Planners save time in the tendering process as the Multiline system concept enables a high degree of standardisation of the interfaces. Dealers benefit from the streamlined product range. Building owners enjoy sophisticated solutions for both design and construction. Multiline combines design diversity and high functionality with extreme durability.

Our ACO sales and consulting team is available to answer any further questions you may have.

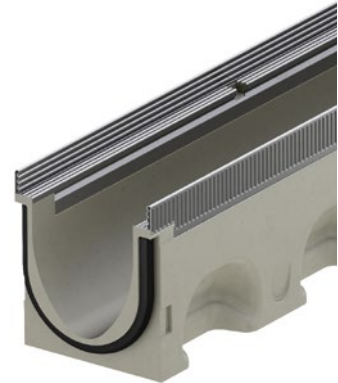
www.aco.com/contact

ACO DRAIN® Multiline NX

ACO product advantages

- Channel bodies made of newly developed ACO material NEXITE®
 - Optimised packing density with finest fillers
 - High material strength and load-bearing capacity
 - Recyclable and environmentally certified (according to KIWA certificate BRL 5070)
- Watertight channel run based on Seal in Technology (according to IKT certificate D01398)
 - Integrated EPDM seal
 - Easy to install
 - Protection of groundwater and construction
 - Controlled rainwater management
- Improved self-cleaning due to V-cross section and continuously smooth channel invert
- Compatible with all Drainlock gratings

- Channel system according EN 1433
- Nominal width 100 mm
- Edge protection
 - Galvanised steel and cast iron: Load classes A 15 – E 600
 - Composite: Load classes A 15 – C 250



Channel bodies without slope, 1000 mm

- Optionally with or without vertical watertight pipe connection
- Version with vertical watertight pipe connection with lip labyrinth seal made of NBR
- Possible combinations for the channel bodies
 - Example: Type 0.0 – 0.0.2 – 0.1
- *) Channel bodies with lip labyrinth seal pipe connection have a minimally greater bottom thickness than the connectable channel bodies
 - Example: Type 5.0.2 corresponds to type 5 – 5.0 – 5.1



Dimensions			Type	Steel, galvanised		Cast iron		Composite	
Length	Width	Height		Weight	Item no.	Weight	Item no.	Weight	Item no.
[mm]	[mm]	[mm]		[kg]		[kg]		[kg]	
1000	137	157	0.0	19.5	3003499	20.8	3010213	18.0	3010165
		182	5.0	22.7	3003510	24.0	3010214	21.2	3010166
		207	10.0	25.7	3003511	27.1	3010215	24.3	3010167



With lip labyrinth seal pipe connection DN/OD 110

1000	137	160 ^{*)}	0.0.2	20.2	3008241	21.6	3010228	18.8	3010200
		185 ^{*)}	5.0.2	23.4	3008363	24.8	3010230	21.9	3010202
		210 ^{*)}	10.0.2	26.4	3008364	27.8	3010231	25.0	3010203

Channel bodies without slope, 500 mm

- With lateral preforms for corner, T and cross connections (adapter required, accessories)



Dimensions			Type	Steel, galvanised		Cast iron		Composite	
Length	Width	Height		Weight	Item no.	Weight	Item no.	Weight	Item no.
[mm]	[mm]	[mm]		[kg]		[kg]		[kg]	
500	137	157	0.1	9.9	3008520	10.6	3010233	9.1	3010205
		182	5.1	11.3	3008521	12.0	3010234	10.6	3010206
		207	10.1	12.7	3008522	13.4	3010235	12.0	3010207

Channel bodies with slope, 1000 mm

- For installation with integrated slope 0.5 %
- All channel bodies can be connected directly to the inlet box
- Possible combinations for the channel body
 - Type 5 – 5.0 – 5.0.2 – 5.1
 - Type 10 – 10.0 – 10.0.2 – 10.1



Dimensions			Type	Steel, galvanised		Cast iron		Composite	
Length	Width	Height		Weight	Item no.	Weight	Item no.	Weight	Item no.
[mm]	[mm]	[mm]		[kg]		[kg]		[kg]	
1000	137	157/162	1	19.9	3006473	21.2	3010218	18.3	3010190
		162/167	2	20.5	3006474	21.9	3010219	19.1	3010191
		167/172	3	21.2	3006475	22.5	3010220	19.7	3010192
		172/177	4	21.8	3006476	23.2	3010221	20.4	3010193
		177/182	5	22.5	3006477	23.8	3010222	21.0	3010194
		182/187	6	23.2	3006478	24.4	3010223	21.7	3010195
		187/192	7	23.8	3006479	25.1	3010224	22.3	3010196
		192/197	8	24.4	3006480	25.7	3010225	22.9	3010197
		197/202	9	25.0	3006481	26.3	3010226	23.5	3010198
		202/207	10	25.6	3006482	27.0	3010227	24.1	3010199

Inlet boxes, 500 mm

- With lip labyrinth seal made of NBR for horizontal watertight pipe connection
- With mounting adapters for watertight channel connection
- With end cap (1 piece) for one-sided watertight closure of the inlet box
- With sludge bucket made of plastic PP



Dimensions			Pipe connection DN/OD	Steel, galvanised		Cast iron		Composite	
Length	Width	Height		Weight	Item no.	Weight	Item no.	Weight	Item no.
[mm]	[mm]	[mm]	[mm]	[kg]		[kg]		[kg]	

Short form with lip labyrinth seal pipe connection

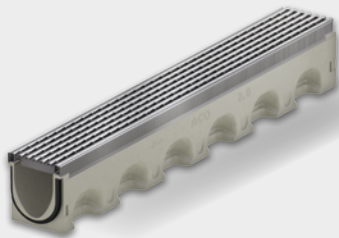
500	137	460	110	30.1	3008272	30.8	3010217	29.3	3010169
			160	29.1	3009937	29.8	3010229	28.4	3010201

ACO WaterCycle



The ACO WaterCycle supports you at every stage of drainage planning. This is rainwater management for the environmental conditions of tomorrow.

Where surface water management and water protection begins



ACO surface water drainage

- Drainage channels
- Road and yard drains
- Gully tops
- Manhole covers



Achieving the right water quality



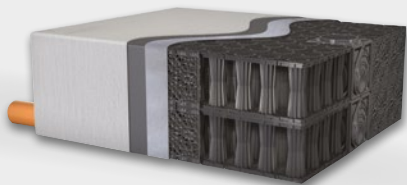
ACO cleaning systems

- Separators
- Sedimentation and filtration systems



Reducing surface runoff
to a natural level

Control discharge rate
to the required level



ACO retention and storage systems

- Emergency systems
- Infiltration and attenuation systems
- Surface water retention basin



ACO control systems

- Flow control systems
- Pump shafts

Our service offer

Each project is different and has its own specifications and challenges. Aside from our products, we can also offer you our know-how and services, so we can develop tailor-made solutions together – from planning to support after completion. ACO is your first point of contact in all project phases.

train:

Information and Further Education

In the ACO Academy we share the know-how of the worldwide ACO Group with architects, planners, processors and traders, for whom quality is important. You are invited to share these benefits.

design:

Planning and Optimisation

The specification and design in rainwater management allows many variations. We help you to find the right answer.



Our invitation for you: askACO

ACO is one of the global market leaders in the Water-Tech segment and has taken on the challenge of developing products that precisely meet the respective requirements. The diverse climatic conditions and specific local differences require solutions that are both ecological and economical in each individual case. Together we will find the right answer to your specific drainage question.

support:

Construction Consultation and Support

To ensure that no unpleasant surprises occur between the planning and implementation of a solution for rainwater management, we advise and assist you for a specific project on your construction site.

care:

Inspection and Maintenance

ACO products are designed and produced for a long life. With our after-sales offers we ensure that ACO fulfils your high quality standards for many years.

ACO. we care for water

ACO is a Water-Tech company that protects water. Building on our global drainage expertise that protects people from water, we increasingly see our mission as also protecting water from people.

With the ACO WaterCycle, ACO provides systems that collect and channel, clean, retain and ultimately reuse water. In this way, ACO contributes to the preservation of clean groundwater as a vital resource, and makes a contribution to tomorrow's world. In its Agenda 2030, the UN global community set the improvement of water quality as one of 17 sustainable development goals.

Intelligent drainage systems from ACO increasingly use smart technology to ensure that rainwater and wastewater are drained, or temporarily stored. With innovative separation and filter technology, we prevent water contamination by pollutants such as fat and grease, fuels, heavy metals and microplastics.

Today, ACO goes one step further: we accept the challenge of reusing water, and thus establishing a resource-saving cycle. For all products and systems, ACO attaches great importance to durability, reusability and a low carbon footprint. The pursuit of sustainability is an ongoing process that we strive to meet every day.

The ACO Group is a global family business that is one of the world market leaders in the Water-Tech segment. Founded in Schleswig-Holstein in 1946, it operates as a transnational network in over 50 countries. Worldwide, ACO is characterised by a high level of decentralised ownership, and explicit regional market proximity.

www.aco.com



Holder
Iver and Hans-Julius Ahlmann



Headquarters of the ACO Group
in Rendsburg/Büdelndorf



5,200

employees in more than 47
countries (Europe, North
and South America, Asia,
Australia, Africa)

1.2 Billion

Euro Sales in 2022

37

production sites
in 18 countries



ACO Academy
for practical training

ACO. we care for water

Intelligent drainage systems from ACO increasingly use smart technology to ensure that rainwater and wastewater are drained, or temporarily stored. With innovative separation and filter technology, we prevent water contamination. We accept the challenge of reusing water, and thus establishing a resource-saving cycle.

ACO Ahlmann SE & Co. KG

Am Ahlmannkai
24782 Büdelsdorf
Germany
info@aco-international.com
www.aco.com



Broschürenruck
auf Circle Silk
100 % Recyclingpapier

