



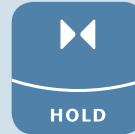
ACO Monoblock

RD Sealed

Product Catalogue



ACO. we care for water

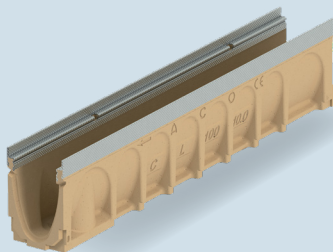


Your question – our answer:

ACO WaterCycle

The ACO WaterCycle supports you at every stage of drainage, rainwater management and treatment planning and creates the solutions for tomorrow's environmental conditions.

Where surface water management and water protection begins



ACO surface drainage

- Drainage channels
- Road and yard drains
- Gully tops
- Manhole covers

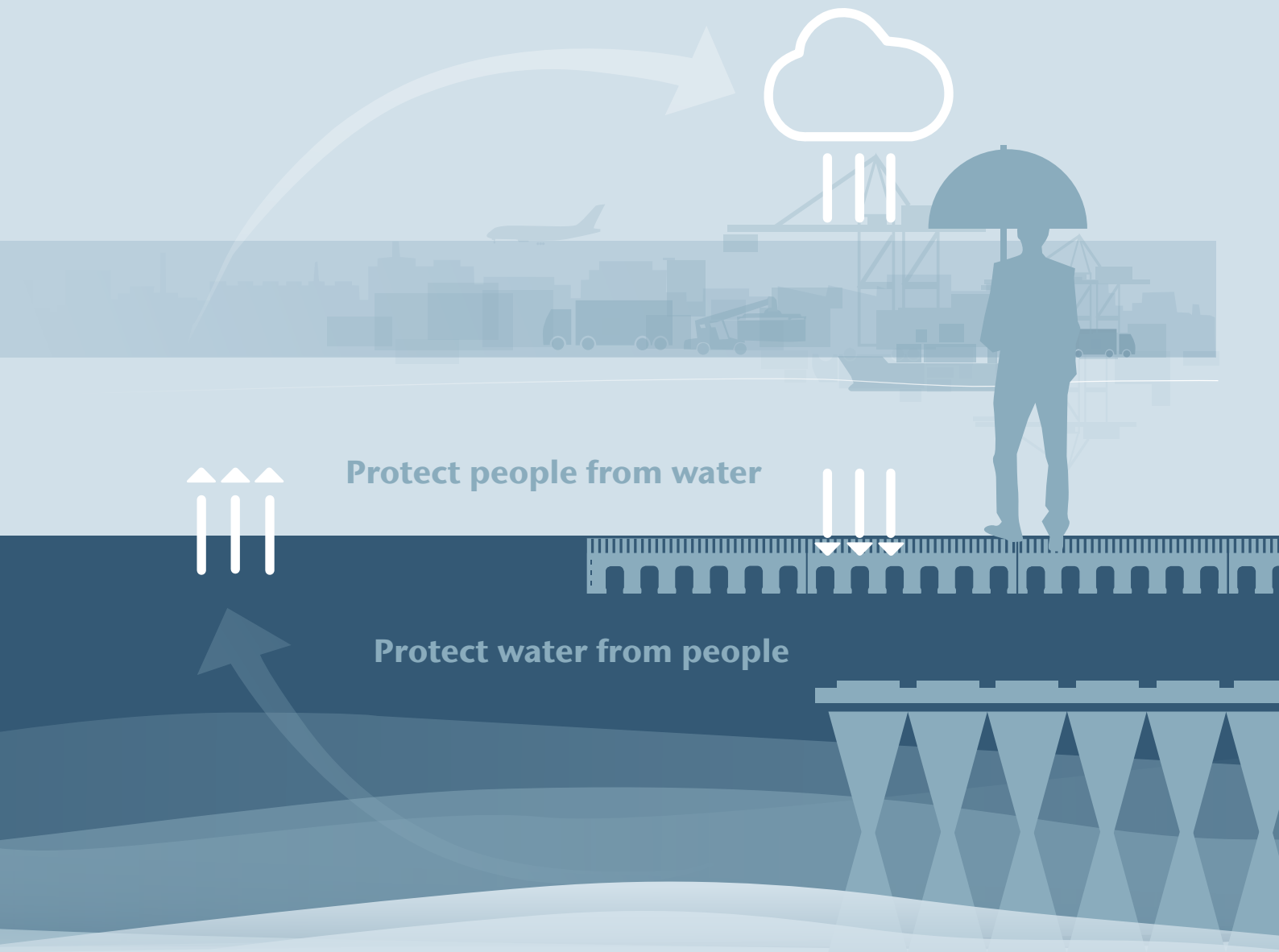


ACO cleaning systems

- Separators
- Sedimentation and filter systems

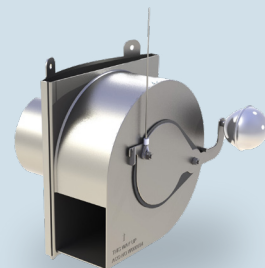
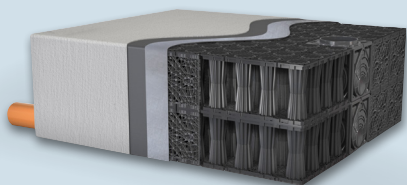
Achieving the right water quality





Reducing surface runoff to a natural level

Control discharge rate to the required level



ACO retention and storage systems

- Emergency systems
- Infiltration and attenuation systems
- Surface water retention basin

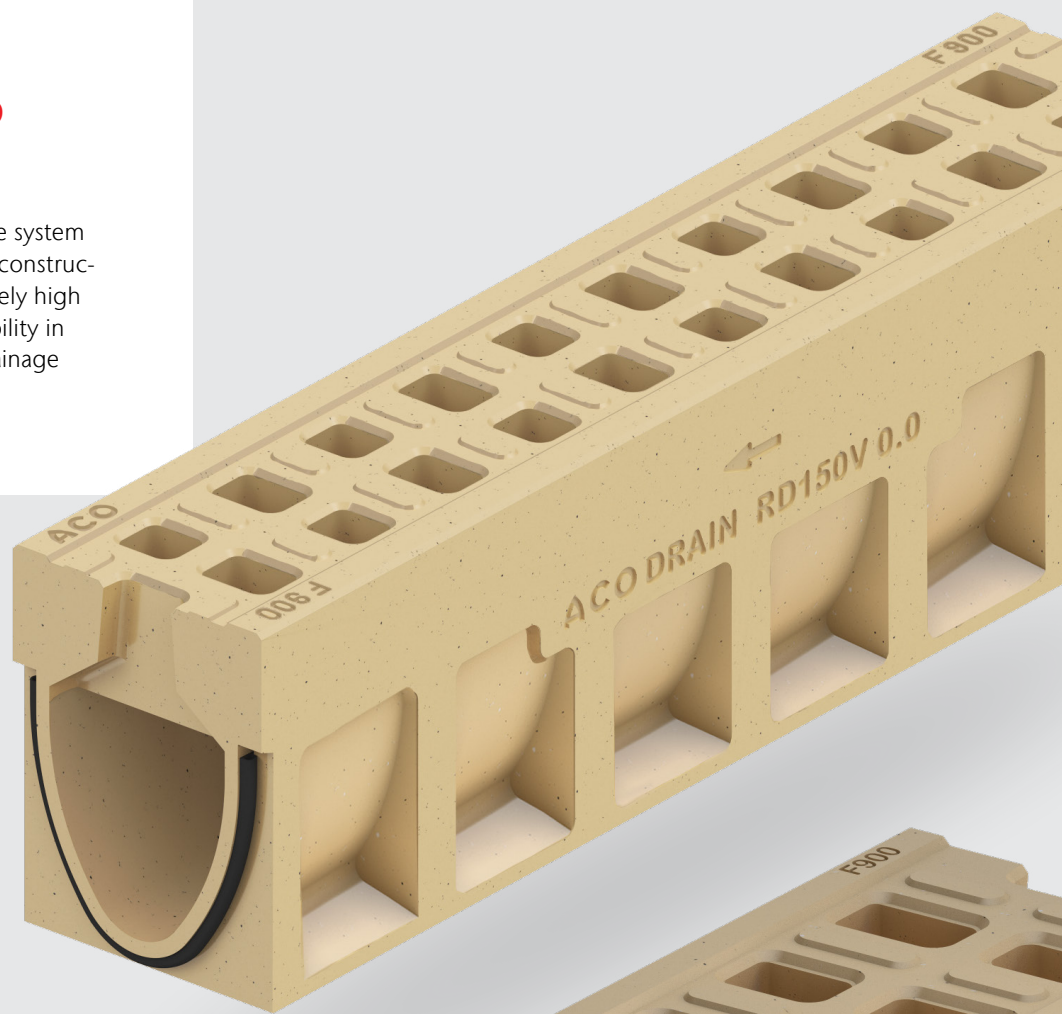


ACO control systems

- Flow control systems
- Pump shafts

ACO DRAIN® Monoblock RD Sealed

The innovative drainage system with unique monocast construction guarantees extremely high levels of safety and stability in all transport surface drainage applications.



ACO DRAIN® Monoblock RD 150V Sealed

See page 10



ACO DRAIN® Monoblock RD 200V Sealed

See page 14



Note

Any more questions?
askACO – your local
ACO team is proud to offer
experience and service

**[www.aco.com/en/
products-and-services/askaco](http://www.aco.com/en/products-and-services/askaco)**

ACO. we care for water

ACO WaterCycle	02
ACO Group	06

ACO DRAIN® Monoblock RD

Introduction	08
--------------	----

ACO DRAIN® Monoblock RD 150V Sealed

Product information and typical areas of use	10
Channels	10
Accessories	12

ACO DRAIN® Monoblock RD 200V Sealed

Product information and typical areas of use	14
Channels	14
Accessories	16

ACO DRAIN Monoblock RD Installation

Installation in paved areas, load class D 400	18
Installation in asphalt areas, load class D 400	19
Installation in concrete areas, load class D 400 to E 600	20

askACO

ACO Design and Support Services	22
---------------------------------	----

ACO. we care for water

ACO is a Water-Tech company that protects water. Building on our global drainage expertise that protects people from water, we increasingly see our mission as also protecting water from people.

With the ACO WaterCycle, ACO provides systems that collect and channel, clean, retain and ultimately reuse water. In this way, ACO contributes to the preservation of clean groundwater as a vital resource, and makes a contribution to tomorrow's world. In its Agenda 2030, the UN global community set the improvement of water quality as one of 17 sustainable development goals.

Intelligent drainage systems from ACO increasingly use smart technology to ensure that rainwater and wastewater are drained, or temporarily stored. With innovative separation and filter technology, we prevent water contamination by pollutants such as fat and grease, fuels, heavy metals and microplastics.

Today, ACO goes one step further: we accept the challenge of reusing water, and thus establishing a resource-saving cycle. For all products and systems, ACO attaches great importance to durability, reusability and a low carbon footprint. The pursuit of sustainability is an ongoing process that we strive to meet every day.

The ACO Group is a global family business that is one of the world market leaders in the Water-Tech segment. Founded in Schleswig-Holstein in 1946, it operates as a transnational network in over 50 countries. Worldwide, ACO is characterised by a high level of decentralised ownership, and explicit regional market proximity.

www.aco.com



Holder
Iver and Hans-Julius Ahlmann



Headquarters of the ACO Group
in Rendsburg/Büdelstorf



5.500

employees in more than
50 countries (Europe, North
and South America, Asia,
Australia, Africa)

1,14 Billion

Euro Sales in 2024

43

production sites
in 20 countries



ACO Academy
for practical training

ACO DRAIN® Monoblock RD System Overview



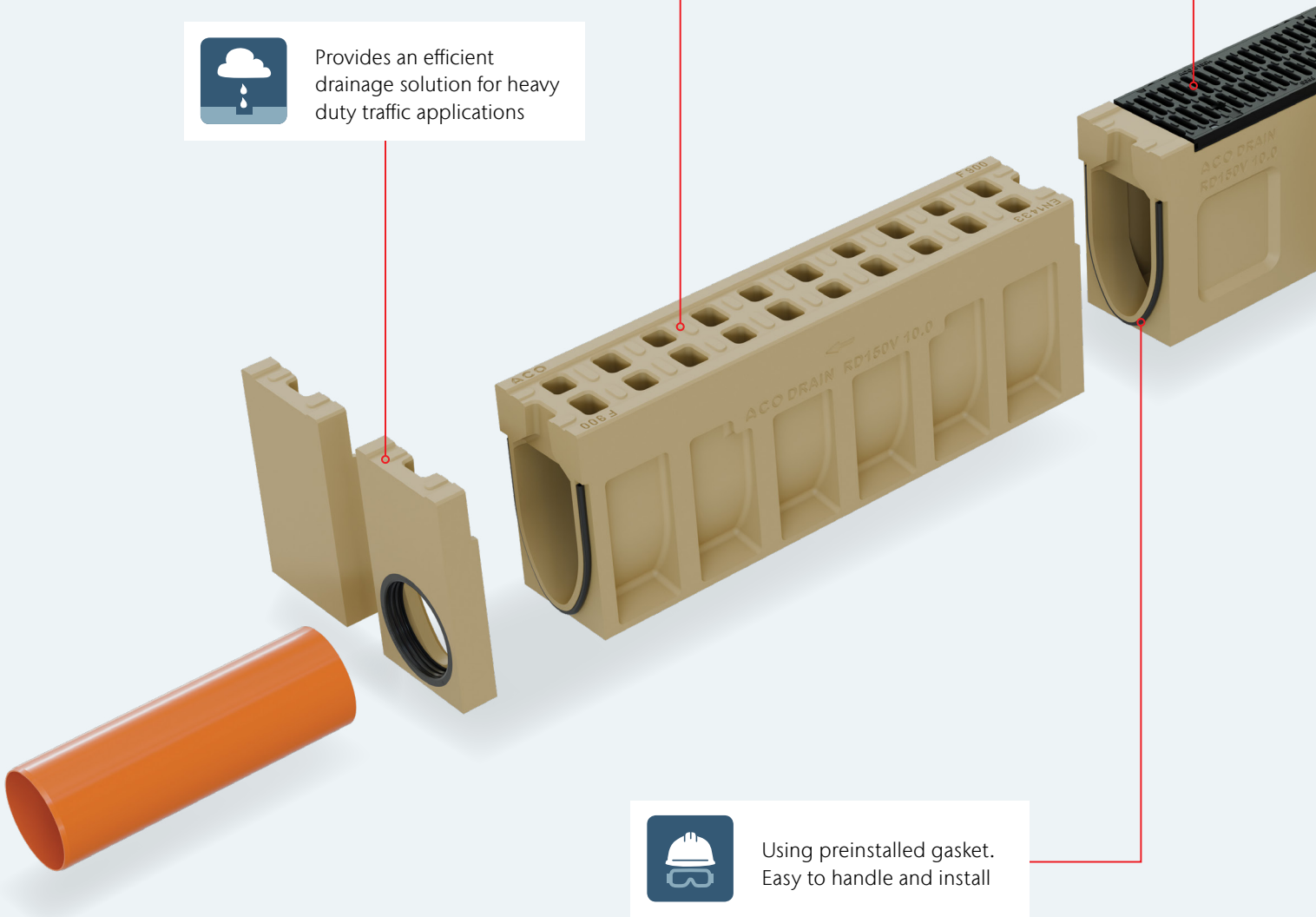
Strong, robust and
reliable design



Boltless Powerlock
system



Provides an efficient
drainage solution for heavy
duty traffic applications



Using preinstalled gasket.
Easy to handle and install



High capacity grating improves the maximum intake flowrate



Channel design improves flow velocity, promotes self cleansing



100% recyclable



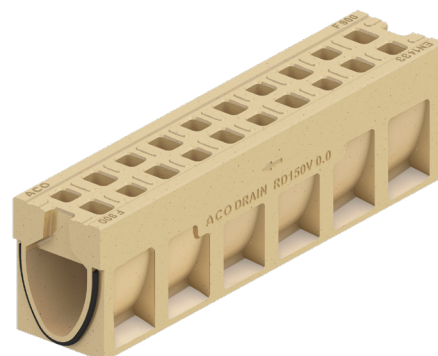
CE marked and
EN 1433: 2002 certified

ACO DRAIN® Monoblock RD 150V Sealed

Product information

Product benefits

- Channel body in monolithic construction
- With integrated EPDM profile seal on the outlet side for liquid-tight installation from above
- Improved self-cleaning due to V-profile
- Channel system in accordance with EN 1433
- Nominal width 200 mm
- Classes D 400 - F 900
- Made of polymer concrete



Typical areas of use

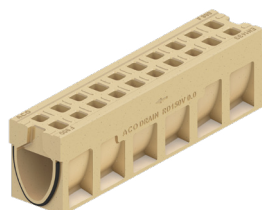
ACO DRAIN® Monoblock RD 150V (NW 150 mm)

Gratings of classes D 400 – F 900

Application	Seal type at channel joint
Motorways	Sealed
Streets	
Logistics and industrial areas	
Truck car parks	
Airports	
Railway crossings	
Border crossings	

	Dimensions			Type	Intake area	Weight	PU	Item no.
	Length	Width	Height					
	[mm]	[mm]	[mm]	[mm]	[cm²/m]	[kg]	[piece]	

Channel body



1000	210	280	0.0	408	68.5	12	2243990
1000	210	380	10.0	408	77.3	12	2243992
1000	210	480	20.0	408	86.2	8	2243994

	Dimensions			Type	Intake area	Weight	PU	Item no.
	Length	Width	Height					
	[mm]	[mm]	[mm]					

Inspection piece



660	210	280	0.1	680	44.3	4	2208810
660	210	380	10.1	680	52	4	2208811
660	210	480	20.1	680	59.7	4	2208812

Inspection piece DN 100 outlet



660	210	280	0.2	680	43.4	4	2243996
660	210	380	10.2	680	50.7	4	2208813
660	210	480	20.2	680	58	4	2208814

Sump unit upper part



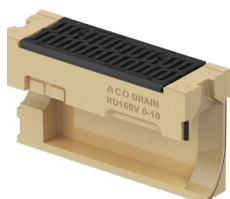
660	210	326	0.0	680	45.8	4	2208815
660	210	426	10.0	680	54	4	2208816
660	210	526	20.0	680	62	4	2208817

Sump unit bottom part








500	230	365	160	-	26.5	6	10935
500	230	365	200	-	26.5	6	10936


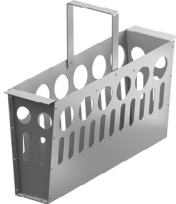

Step connector



660	210	380	0.0 to 10.0	680	55	4	2208825
660	210	480	10.0 to 20.0	680	62.6	4	2244008

Accessories

	Dimensions			Type	Pipe connection	Weight	PU	Item no.
	Length	Width	Height		DN/OD			
					[mm]			
	[mm]	[mm]	[mm]	[mm]		[kg]	[piece]	
End cap for channel beginning								
	50	210	280	0.0	-	5	30	2243997
	50	210	380	10.0	-	6.5	30	2243998
	50	210	480	20.0	-	8.1	30	2243999
End cap for channel end								
	50	210	280	0.0	-	5.7	30	2244000
	50	210	380	10.0	-	7.5	30	2244001
	50	210	480	20.0	-	9.3	30	2208818
End cap end with sealing ring DN 150								
	50	210	280	0.0	-	4.2	30	2244002
	50	210	380	10.0	-	6	30	2244003
	50	210	480	20.0	-	7.8	30	2244004
Adapter for on-site length adjustment								
	50	210	280	0.0	-	3.8	30	2244005
	50	210	380	10.0	-	4.4	30	2244006
	50	210	480	20.0	-	5	30	2244007
Adapter for change flow direction								
	100	210	280	0.0	-	7.6	30	2208819
	100	210	380	10.0	-	8.8	30	2208820
	100	210	480	20.0	-	10	30	2208821

	Dimensions			Type	Pipe connection	Weight	PU	Item no.
	Length	Width	Height		DN/OD			
					[mm]			
Adapter T-connection								
	50	210	280	0.0	-	4.6	30	2208822
	50	210	380	10.0	-	5.3	30	2208823
	50	210	480	20.0	-	6.1	30	2208824
Sludge bucket for inlet shaft								
	-	-	-	-	-	1.9	100	134092
Grating hook								
	-	-	-	-	-	0.3	200	01290

ACO DRAIN® Monoblock RD 200V Sealed

Product information

Product benefits

- Channel body in monolithic construction
- With integrated EPDM profile seal on the outlet side for liquid-tight installation from above
- Improved self-cleaning due to V-profile
- Channel system in accordance with EN 1433
- Nominal width 200 mm
- Classes D 400 - F 900
- Made of polymer concrete



Typical areas of use

ACO DRAIN® Monoblock RD 200V (NW 200 mm) Gratings of classes D 400 – F 900	
Application	Sealed
Seal type at channel joint	Sealed
Motorways	■
Streets	■
Logistics and industrial areas	■
Truck car parks	■
Airports	■
Railway crossings	■
Border crossings	■

	Dimensions			Type	Intake area	Weight	PU	Item no.
	Length	Width	Height					
	[mm]	[mm]	[mm]	[mm]	[cm²/m]	[kg]	[piece]	

Channel body



1000	260	330	0.0	583	97.4	9	132571
1000	260	440	10.0	583	108.8	6	133130
1000	260	540	20.0	583	119.0	6	133175

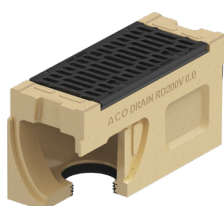
	Dimensions			Type	Intake area	Weight	PU	Item no.
	Length	Width	Height					
	[mm]	[mm]	[mm]					

Inspection piece



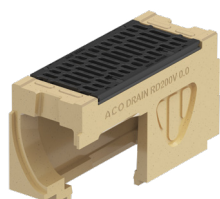
660	260	330	0.1	935	65.0	8	132502
660	260	430	10.1	935	72.5	4	152000
660	260	540	20.1	935	80.6	4	133177

Inspection piece DN 100 outlet



660	260	330	0.2	935	62.8	8	132503
660	260	430	10.2	935	70.0	4	152001
660	260	330	20.2	935	78.6	4	133178

Sump unit upper part



660	260	360	0.0	935	64.7	4	132504
660	260	460	10.0	935	71.2	4	152003
660	260	560	20.0	935	80.5	4	133179

Sump unit bottom part



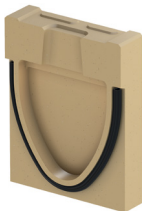
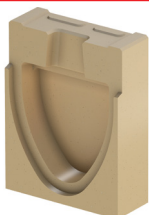



500	230	365	160	-	26.5	6	10935
500	230	365	200	-	26.5	6	10936




Step connector



1000	260	430	0.0 to 10.0	583	123.5	3	152011
1000	260	430	10.0 to 20.0	583	133.0	3	152012

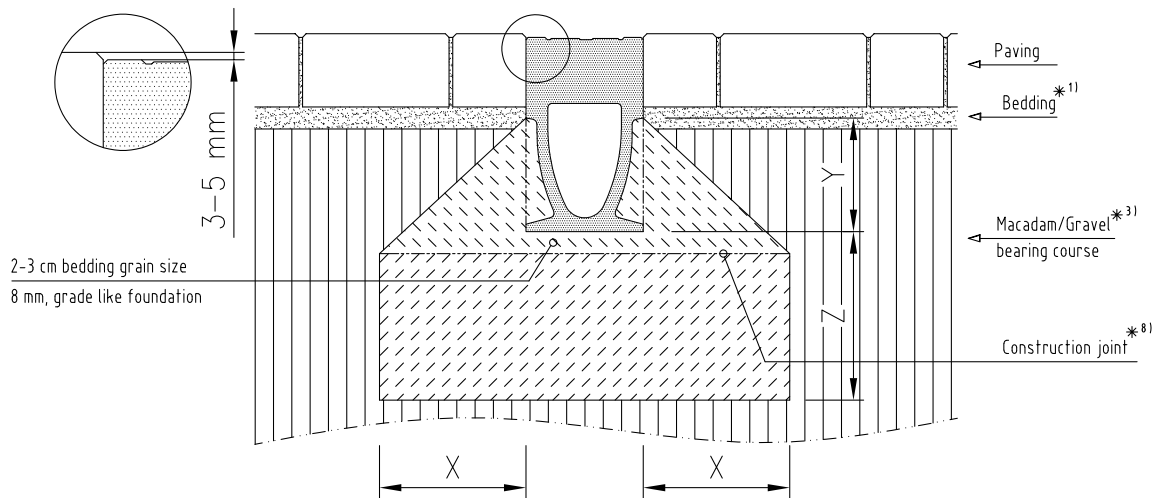
Accessories

	Dimensions			Type	Pipe connection	Weight	PU	Item no.
	Length	Width	Height		DN/OD			
					[mm]			
	[mm]	[mm]	[mm]	[mm]		[kg]	[piece]	
End cap for channel beginning								
	84	260	330	0.0	-	10.6	30	132505
	84	260	440	10.0	-	12.8	30	152005
	84	260	540	20.0	-	14.2	30	133181
End cap end for channel end								
	70	260	330	0.0	-	13.0	30	132506
	70	260	440	10.0	-	16.6	30	152006
	70	260	540	20.0	-	18.2	30	133182
End cap end with sealing ring DN 150								
	70	260	330	0.0	160	11.5	30	132507
	70	260	440	10.0	160	15.0	30	152007
	70	260	540	20.0	160	16.4	30	133183
Adapter for on-site length adjustment								
	84	260	330	0.0		7.4	30	132509
	84	260	440	10.0		10.3	30	152008
	84	260	540	20.0		9.1	30	133194
Adapter for change flow direction								
	110	260	330	0.0	-	15.0	30	132508
	110	260	440	10.0	-	21.1	30	152009
	110	260	540	20.0	-	18.2	30	133184

	Dimensions			Type	Pipe connection	Weight	PU	Item no.
	Length	Width	Height		DN/OD			
	[mm]	[mm]	[mm]		[mm]			
Adapter T-connection								
	70	260	330	0.0	-	10.0	30	132515
	70	260	440	10.0	-	13.2	30	152010
	70	260	540	20.0	-	13.0	30	133185
Sludge bucket for inlet shaft								
	-	-	-	-	-	1.9	100	134092
Grating hook								
	-	-	-	-	-	0.3	200	01290

ACO DRAIN® Monoblock RD

Installation in paved areas, load class D 400

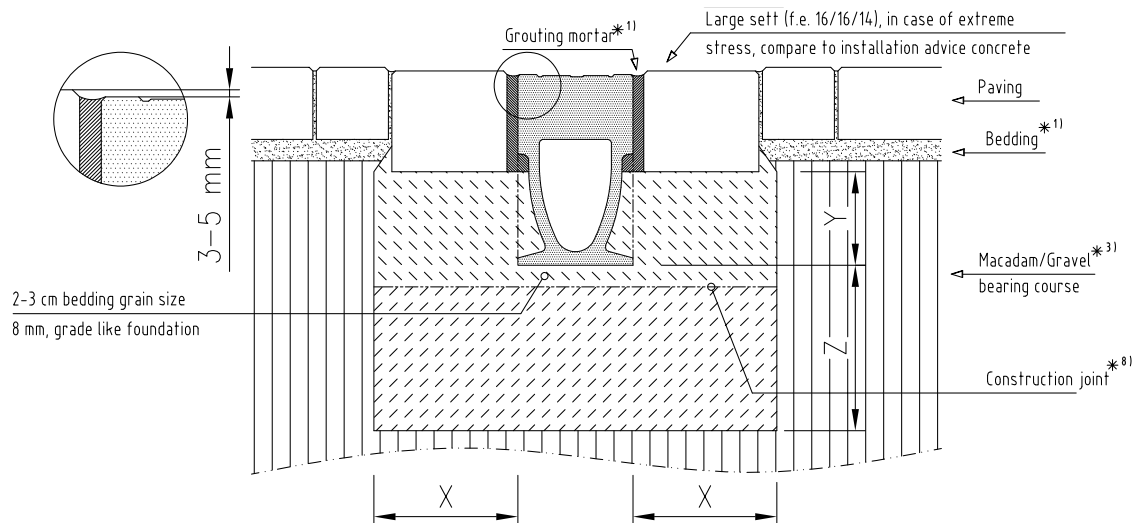
For heavy duty load please see footnote ^{*7)}

Not for lateral crossing on high frequent roads, in housing estates or in front of railway crossings!

Load class	(ref. EN 1433)	A 15	B 125	C 250	D 400	E 600	F 900
Min. quality for bedding concrete	(ref. EN 206-1)				≥ C 25/30		
Exposure class ^{*16)}					(X0)		
Bedding dimensions	X				≥ 20	Not available for this load class. Please use appropriate channel systems like PowerDrain, SK, Qmax or Monoblock	
	Y				Top edge of side pocket ^{*2)}		
	Z				≥ 20		

*...) please see list of footnotes at beginning of chapter drawings

Installation in paved areas, load class E 600

For heavy duty load please see footnote ^{*7)}

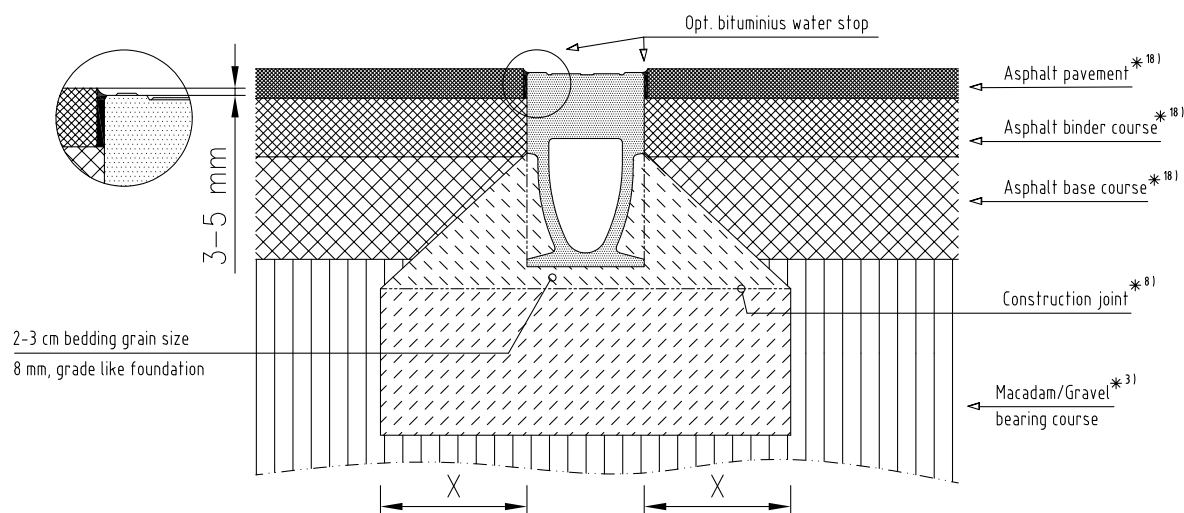
Not for lateral crossing on high frequent roads, in housing estates or in front of railway crossings!

Load class	(ref. EN 1433)	A 15	B 125	C 250	D 400	E 600	F 900
Min. quality for bedding concrete	(ref. EN 206-1)					≥ C 25/30	
Exposure class ^{*16)}						(X0)	
Bedding dimensions	X					≥ 20	Project specific design may be required.
	Y					Bottom of stretcher	
	Z					≥ 20	

*...) please see list of footnotes at beginning of chapter drawings

Installation in asphalt areas, load class D 400

For heavy duty load please see footnote *7)



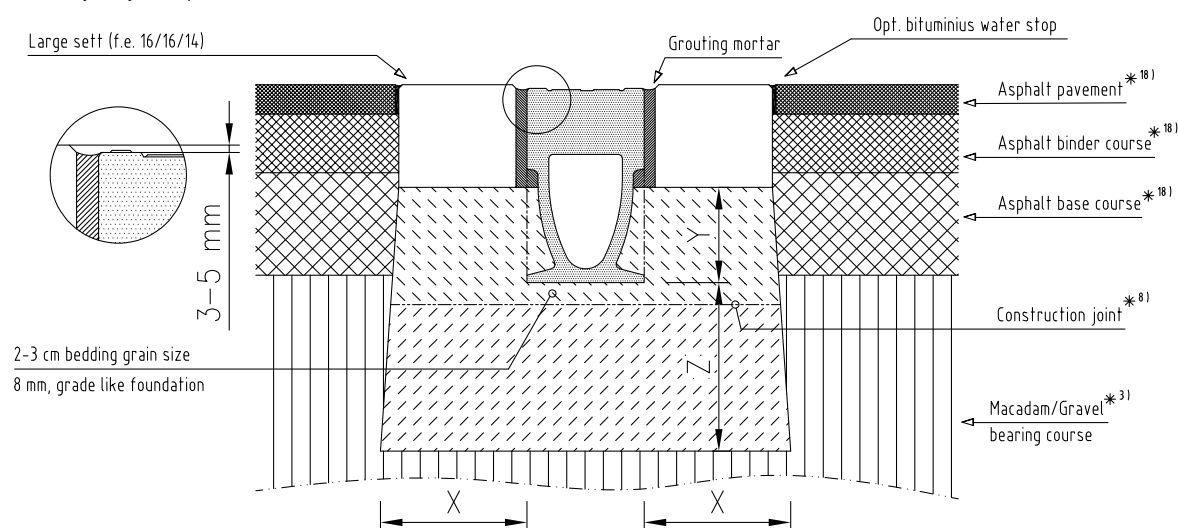
Not for lateral crossing on high frequent roads, in housing estates or in front of railway crossings!

Load class	(ref. EN 1433)	A 15	B 125	C 250	D 400	E 600	F 900
Min. quality for bedding concrete	(ref. EN 206-1)				≥ C 25/30		
Exposure class *16)					(X0)		
Bedding dimensions	X				≥ 20	Not available for this load class. Please use appropriate channel systems like PowerDrain, SK, Qmax or Monoblock	
	Y				Top edge of side pocket*2)		
	Z				≥ 20		

*...) please see list of footnotes at beginning of chapter drawings

Installation in asphalt areas, load class E 600

For heavy duty load please see footnote *7)

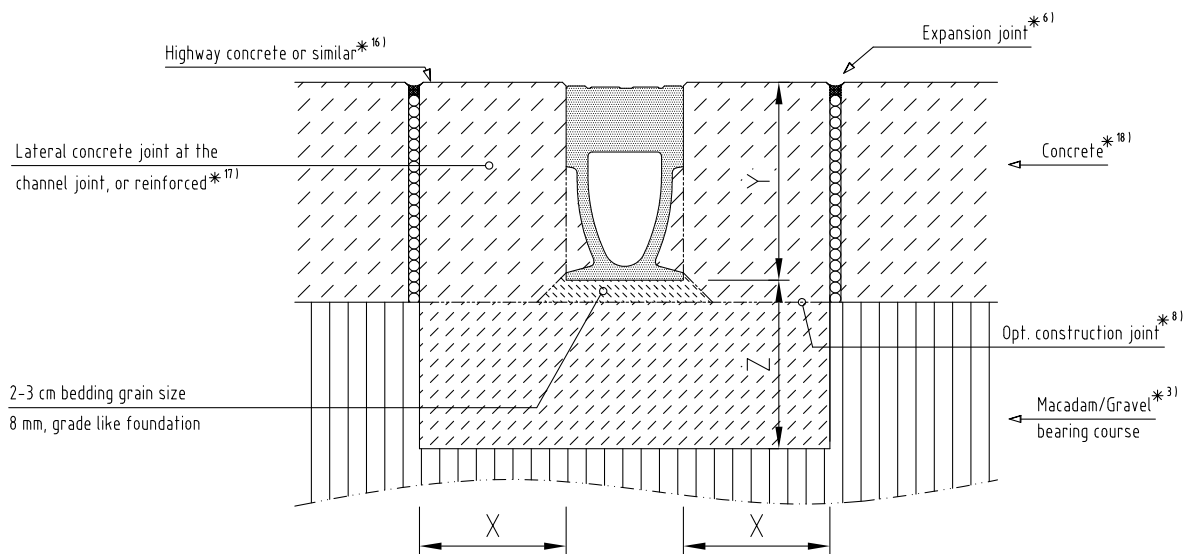


Not for lateral crossing on high frequent roads, in housing estates or in front of railway crossings!

Load Class	(ref. EN 1433)	A 15	B 125	C 250	D 400	E 600	F 900
Min. quality for bedding concrete	(ref. EN 206-1)				≥ C 25/30	≥ C 25/30	
Exposure class *16)					(X0)	(X0)	
Bedding dimensions	X				≥ 20	≥ 20	Project specific design may be required.
	Y				Bottom of stretcher	Bottom of stretcher	
	Z				≥ 20	≥ 20	

*...) please see list of footnotes at beginning of chapter drawings

Installation in concrete areas, load class D 400 to E 600



Not for lateral crossing on high frequent roads, in housing estates or in front of railway crossings!

Load class	(ref. EN 1433)	A 15	B 125	C 250	D 400	E 600	F 900
Min. quality for bedding concrete	(ref. EN 206-1)				≥ C 25/30	≥ C 25/30	
Exposure class ^{*16)}					(X0)	(X0)	Project specific design may be required.
Bedding dimensions	X				≥ 20	≥ 20	
	Y				Height of channel		
	Z				≥ 20	≥ 20	

*...) please see list of footnotes at beginning of chapter drawings

Notes

ACO Design and Support Services

A Comprehensive, Professional Approach to Every Project

At ACO, we offer a range of expert design and support services to ensure our customers benefit from high-performing, durable drainage systems that meet the demands of their specific production environments.



More information available at customerservice@aco.cz

Our support services start at planning new drainage layouts and optimizing existing designs to providing BIM data, on-site system assembly, and precision welding.

Our team of professionals is ready to assess your current drainage performance, identify potential risks related to hygiene, operation, and safety, and develop a structured corrective action plan.

We ensure that your drainage system aligns with your production technology, traffic flow, and operational needs — supporting both efficiency and workplace safety.



Follow us on:



ACO. we care for water

Intelligent drainage systems from ACO increasingly use smart technology to ensure that rainwater and wastewater are drained, or temporarily stored. With innovative separation and filter technology, we prevent water contamination. We accept the challenge of reusing water, and thus establishing a resource-saving cycle.

ACO Industries k.s.

Havlíčková 260
582 22 Příbyslav
Czech Republic

www.swm.aco

