



ACO Secant covers –

infill, concreted or solid top

ACO Secant B125 – F900

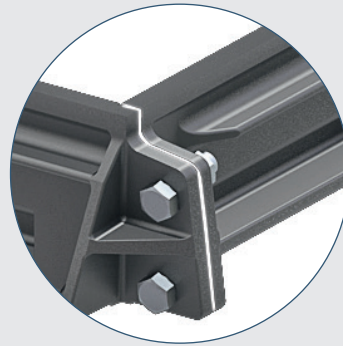
ACO Secant Covers B125/D400/F900

Secant is a modular system for access covers in all dimensions.
Standard widths in mm:
450, 600, 750, 900, 1050

ACO product benefits

- covers with or without concrete filling, solid top covers F 900
- with/without locking (screw)
- optional watertight
- frame height: 76 mm (B 125), 140 mm (D 400 – F 900)
- machined contact surfaces
- lids can be removed in any order

Lead and aluminium free connections



New:

Until now, multi-part manhole covers were often connected with lead or aluminium joints. Lead is toxic and no longer permitted. Aluminium can be used but leads to strong decomposition of the mortar (e.g. in road tunnels) when wetness and road salt enter.

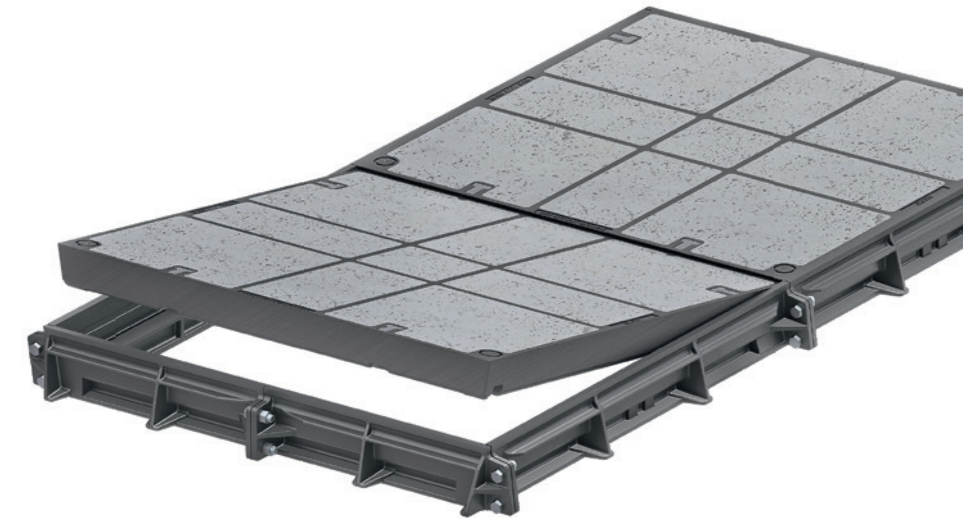
ACO therefore uses an aluminium-free and lead-free joint connection as standard for all Secant manhole covers.

Design variants and features

Secant covers with BEGU lid

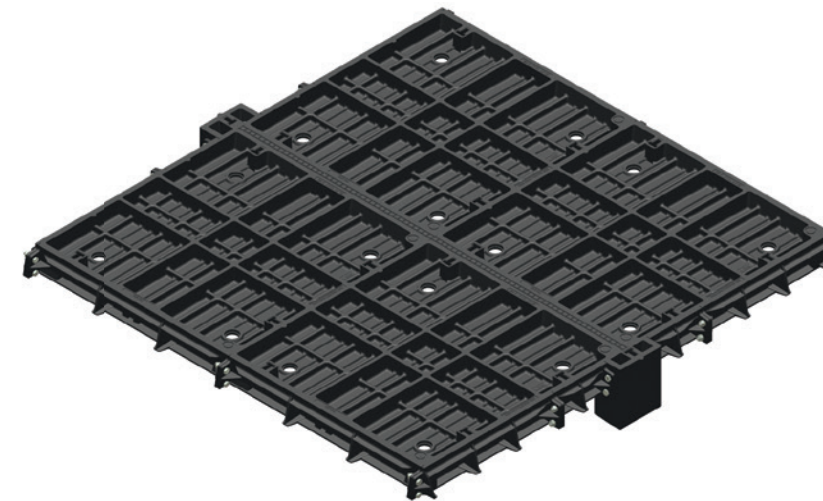
The covers of the manhole covers are concreted in the factory.

New: In grey or anthracite on request



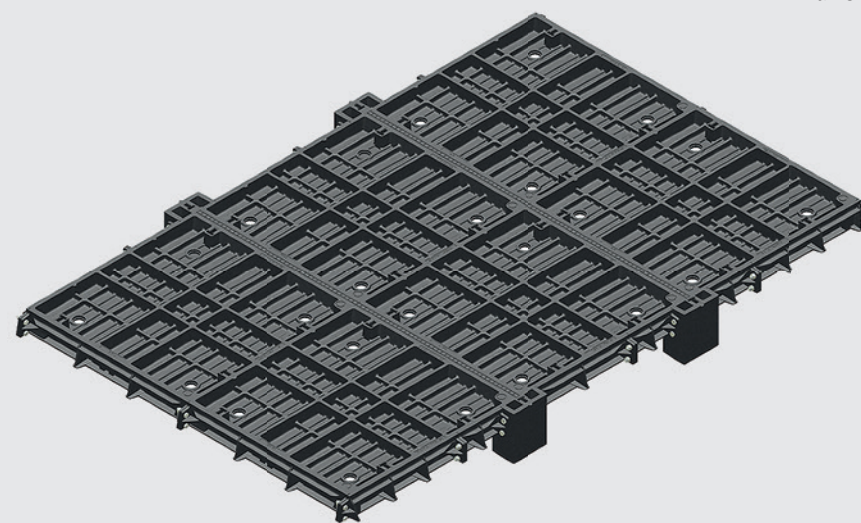
Secant covers with cast-iron lid

Can be filled with any covering on site.



Secant covers with solid top lid

The covers of the manhole cover are made of cast iron - the surface is non-slip. A recess in the cover allows a sign, e.g. operator identification, to be glued in.



Multiple beam versions

Secant covers with BEGU lid

B 125

| Clear opening | | Max. external dimension | | Weight [kg] | Number of cover | Heaviest cover | Article number | Article number (locked) |
|---------------|-------------|-------------------------|-------------|-------------|-----------------|----------------|----------------|-------------------------|
| Width [mm] | Length [mm] | Width [mm] | Length [mm] | | | | | |
| 450 | 600 | 690 | 780 | 128 | 1 | 95 | 1404.06.01 | 1404.06.02 |
| | 1300 | 690 | 1480 | 241 | 2 | 95 | 1404.13.01 | 1404.13.02 |
| 600 | 600 | 840 | 780 | 141 | 1 | 104 | 1406.06.01 | 1406.06.02 |
| | 1300 | 840 | 1480 | 263 | 2 | 104 | 1406.13.01 | 1406.13.02 |
| 750 | 750 | 990 | 930 | 185 | 1 | 140 | 1407.07.51 | 1407.07.52 |
| | 1300 | 990 | 1480 | 304 | 2 | 123 | 1407.13.01 | 1407.13.02 |
| 900 | 900 | 1140 | 1140 | 282 | 1 | 226 | 1409.09.01 | 1409.09.02 |
| | 1900 | 1140 | 2140 | 538 | 2 | 226 | 1409.19.01 | 1409.19.02 |
| 1050 | 600 | 1290 | 2290 | 371 | 1 | 311 | 1410.10.01 | 1410.10.52 |
| | 1300 | 1290 | 1540 | 476 | 2 | 205 | 1410.13.01 | 1410.13.02 |

Secant covers with cast-iron lid

Art.codes xxxx.xx.00 or xxxx.xx.50 = without concrete infill
Art.codes xxxx.xx.03 or xxxx.xx.53 = locked, without concrete infill

Secant covers with BEGU lid

D 400

| Clear opening | | Max. external dimension | | Weight [kg] | Number of cover | Heaviest cover | Article number | Article number (locked) |
|---------------|-------------|-------------------------|-------------|-------------|-----------------|----------------|----------------|-------------------------|
| Width [mm] | Length [mm] | Width [mm] | Length [mm] | | | | | |
| 450 | 600 | 690 | 780 | 129 | 1 | 95 | – | 1504.06.02 |
| | 1300 | 690 | 1480 | 241 | 2 | 95 | – | 1504.13.02 |
| 600 | 600 | 840 | 820 | 222 | 1 | 149 | 1506.06.01 | 1506.06.02 |
| | 1300 | 840 | 1520 | 407 | 2 | 149 | 1506.13.01 | 1506.13.02 |
| 750 | 750 | 990 | 980 | 320 | 1 | 233 | 1507.07.51 | 1507.07.52 |
| | 1450 | 990 | 1680 | 541 | 2 | 233 | 1507.14.51 | 1507.14.52 |
| 900 | 900 | 1140 | 1130 | 432 | 1 | 330 | 1509.09.01 | 1509.09.02 |
| | 1900 | 1140 | 2130 | 811 | 2 | 330 | 1509.19.01 | 1509.19.02 |
| 1050 | 1050 | 1290 | 1280 | 648 | 1 | 527 | 1510.10.51 | 1510.10.52 |
| | 2000 | 1290 | 2230 | 1180 | 3 | 326 | 1510.20.01 | – |

Secant covers with cast-iron lid

Art.codes xxxx.xx.00 or xxxx.xx.50 = without concrete infill
Art.codes xxxx.xx.03 or xxxx.xx.53 = locked, without concrete infill

Secant covers with BEGU lid

F 900

| Clear opening | | Max. external dimension | | Weight [kg] | Number of cover | Heaviest cover | Article number | Article number (locked) |
|---------------|-------------|-------------------------|-------------|-------------|-----------------|----------------|----------------|-------------------------|
| Width [mm] | Length [mm] | Width [mm] | Length [mm] | | | | | |
| 600 | 600 | 840 | 820 | 222 | 1 | 149 | 1606.06.01 | 1606.06.02 |
| | 1300 | 840 | 1520 | 407 | 2 | 149 | 1606.13.01 | 1606.13.02 |
| 750 | 750 | 990 | 980 | 320 | 1 | 233 | 1607.07.51 | 1607.07.52 |
| | 1450 | 990 | 1680 | 541 | 2 | 233 | 1607.14.51 | 1607.14.52 |

Only availabale with concrete infill

Secant solid top lid

F 900

| Clear opening | | Max. external dimension | | Weight [kg] | Number of cover | Heaviest cover | Article number | Article number (locked) |
|---------------|-------------|-------------------------|-------------|-------------|-----------------|----------------|----------------|-------------------------|
| Width [mm] | Length [mm] | Width [mm] | Length [mm] | | | | | |
| 600 | 600 | 840 | 820 | 203 | 1 | 130 | 1606.06.05 | 1606.06.06 |
| | 1300 | 840 | 1520 | 370 | 2 | 130 | 1606.13.05 | 1606.13.06 |
| 750 | 750 | 990 | 980 | 243 | 1 | 160 | 1607.07.55 | 1607.07.56 |
| | 1450 | 990 | 1680 | 408 | 2 | 160 | 1607.14.55 | 1607.14.56 |
| 900 | 900 | 1140 | 1130 | 298 | 1 | 196 | 1609.09.05 | 1609.09.06 |
| | 1900 | 1140 | 2130 | 544 | 2 | 196 | 1609.19.05 | 1609.19.06 |
| 1050 | 1050 | 1290 | 1280 | – | 1 | – | 1610.10.55 | 1610.10.56 |
| | 2000 | 1290 | 2230 | – | 3 | – | 1610.20.05 | 1610.20.06 |

Further lengths on request – please ask for our catalogue

Supplementary components for Secant manhole covers

Sealing plug

- for lift-out opening

article number 1106.19.30



1 set of lifting and operating handles

- weight approx. 7.0 kg

article number 1000.41.45

consisting of:

- 2 lifting handles

article number 1000.41.47

- 1 wrench

article number: 1000.41.48

- 2 carrying handles

article number: 1000.41.49



Operating the Secant manhole cover

To open, lift the cover on the side marked ‘HIER ÖFFNEN’ and pull it out: Place the lift-out handles with the hammer-head screws in the lift-out openings. Turn them 90° with the attached wing nut and fix the lifting handles by tightening the hexagon nut (below the wing nut).

Turn the lifting screws to release the cover. You can then lift the cover.

Removal: The lid can be removed with the carrying handles (insert them into the side lifting holes of the lid): Insert the carrying handles and turn them 90°. Then secure the handle by tightening the wing nut.

Please note: Before closing the cover, clean the contact surfaces on the frame and cover.



ACO manhole covers – highest quality for maximum safety



ACO Secant is the ideal solution for covering rectangular manholes for industry and infrastructure. They are designed for a wide range of applications such as inspection, maintenance, supply and disposal shafts, cable ducts and cable pull shafts in traffic areas. They close the manhole operationally and traffic-safe and protect the manhole from contamination.

The complete product range includes hundreds of sizes and designs. You can find the Secant catalogue at:

www.aco-tiefbau.de/download/prospekte



Every ACO product supports
the ACO system chain



-
- Drainage channels
 - Road and yard drains
 - Gully tops
 - Manhole covers
 - Rainwater treatment
 - Infiltration and attenuation
 - Pump shafts
 - Flow control systems
 - Tree protection
 - Amphibian protection
-

ACO Passavant Detego GmbH

Scheidertalstr. 3
65526 Aarbergen
Tel. +49 6120 28 8126
Fax +49 6120 28 6095
cast-iron-team@aco.com

www.aco-passavant-guss.de
www.aco.com
www.aco-tiefbau.com

**ACO. creating
the future of drainage**

